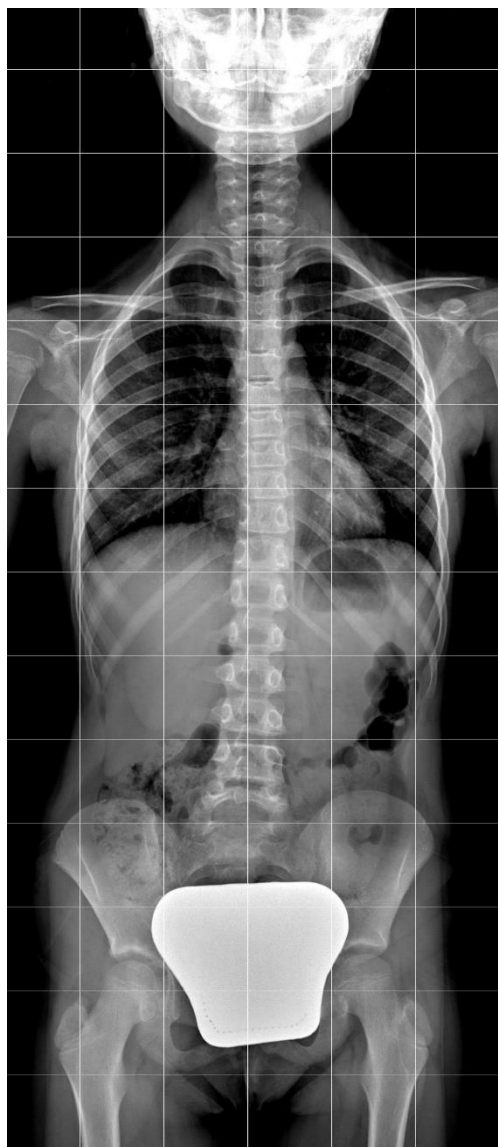


X-FRAME DRF

Image acquisition solution for digital radio-fluoro exams



X-FRAME DRF is the newest Italtay product: a complete **Made-In-Italy** new software for acquisition and processing of radiographic and fluoroscopic digital images

X-FRAME DRF

X-FRAME DRF acquires DRF images on a latest-generation 43x43 cm (17"x17") DYNAMIC FLAT PANEL DETECTOR, and immediately displays the diagnostic image after a strong automatic processing.

X-FRAME DRF is specifically designed for:
Fluoroscopy applications, as: Gastrointestinal, Urological/Gynaecological, Musculoskeletal, Swallowing, ERCP Procedures, Myelography, Lymphography, and Paediatrics.
Radiographic exams. Skull, Abdomen, Spine, Pelvis, Extremities (also weight-bearing), every projection can be performed on a remote-tilting table.
Full-leg Full-Spine reconstruction (Stitching).

Complete Integration

Customer driven innovations
Robust technology
Intuitive Graphical User Interface
100% DICOM 3.0 compliant

Improve flexibility

One single interface for Rad and Fluoro applications
Full legs/Full spine automatic imaging

Effortless Diagnosis

Fast Image presentation
Automatic processing
Post processing tools

Improve patient care

Dose monitoring
Exposure Index
Image optimization without retakes

